

**LEPA**



# **LAVERNE ELEMENTARY**

## **PREPARATORY ACADEMY**

PH: (760) 948-4333 • FAX: (760) 948-9333

January 10, 2018

Dear Parents/Guardians,

As part of our LEPA family, we want to share some exciting news with you.

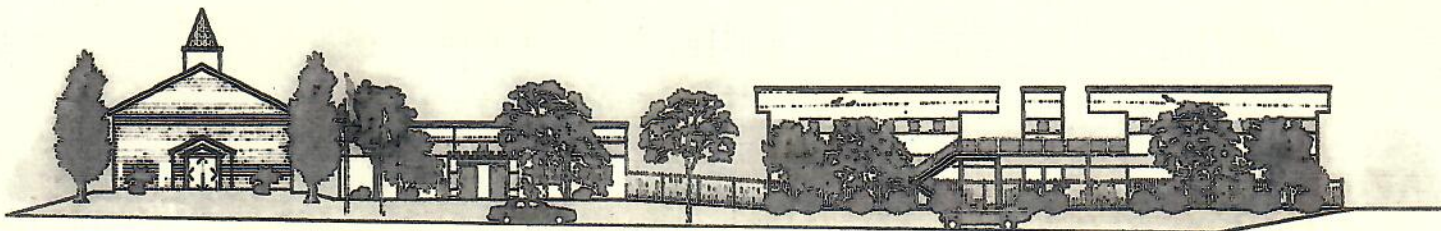
LEPA will be breaking ground this summer on a brand-new facility. It has always been our dream to have our own space where scholars can continue to grow and excel. It has not been an easy or quick road, and we appreciate your patience and understanding along the way. Perseverance is crucial and we are extremely happy to have our dream realized.

Although the move cannot come soon enough, we do have a lot that will need to be completed before we make the transition to our new location. We are anticipating LEPA's new home to be ready to open for the 2019-2020 school year.

Below, we have supplied you with a picture of what LEPA's new campus will look like. We truly appreciate your belief in our school and staff. We look forward to the exciting move with all our families in the near future!

Respectfully,

Debra Tarver, CEO



[www.lepacademy.com](http://www.lepacademy.com)

7280 OXFORD AVE, HESPERIA, CA 92345 • PO BOX 400880 ~ HESPERIA, CA 92340